



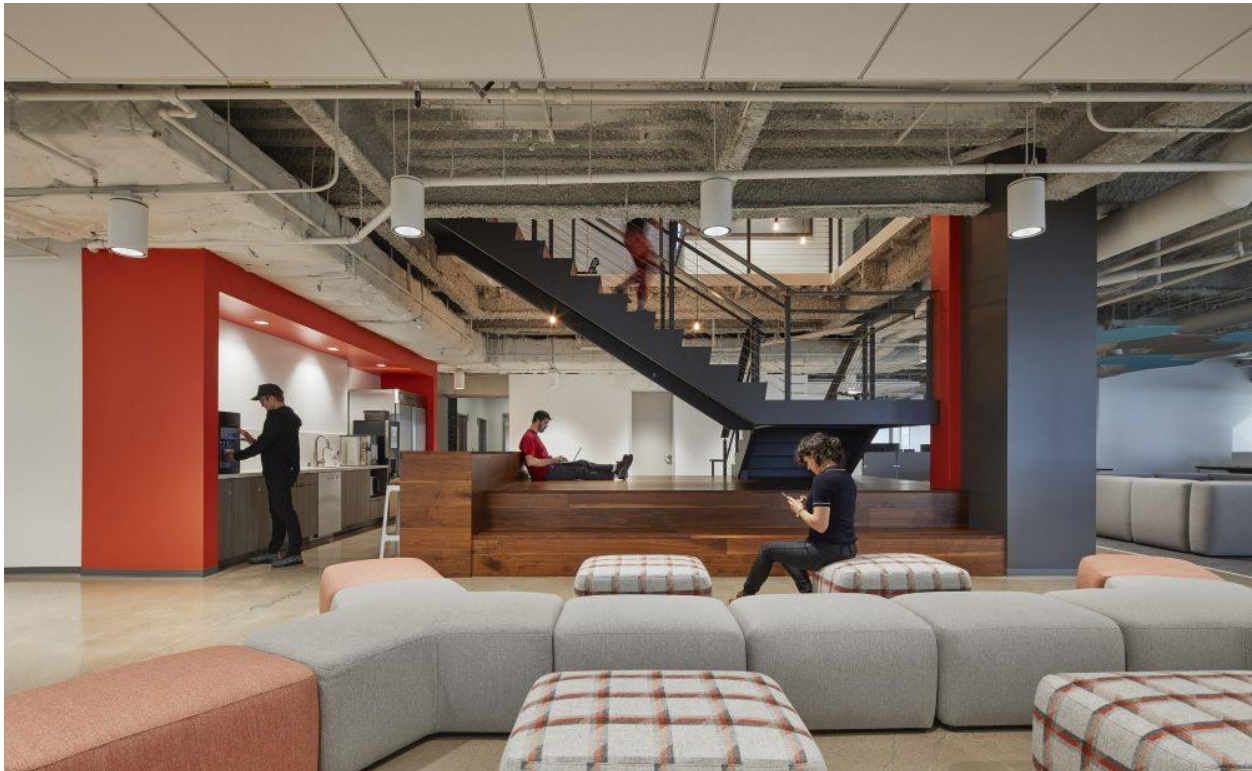
**WORKDESIGN
MAGAZINE**

EXPLORING IDEAS THAT SHAPE THE PLACES WE WORK

A Common Sense Guide for Returning to the Post COVID-19 Workplace

by Cynthia Milota

Ware Malcomb's Cynthia Milota offers strategic and tactical planning guidelines for our ultimate return to the office.



Social distancing can be managed in corporate spaces. Photo Credit: Benny Chan.

Health and safety were the top motives for sending employees home to work during the COVID-19 pandemic. And health and safety will be the driving factors for employees' eventual return to the office. Ware Malcomb's 2020 *Return to the Office* research project, explored employees' motivations and behaviors during the forced work from home period, where findings affirmed that employees will be emboldened to push back on returning to the workplace until they feel it is safe to do so. As organizations begin planning this transition back to the office, things will be different. Significant attention will be paid to "visible housekeeping" that was once intentionally concealed. Workstation areas will no longer have the crowded café feel, rather they will be de-

densified to maintain social distancing. And whoever imagined that the concept of a restroom attendant would ever re-surface?

Every organization's return to the office will be customized to their circumstances, but each will have a few commonalities:

- **Perception is reality** and what employees perceive is what they will believe is happening.
- **Transparency is essential** for building trust and managing misinformation.
- **Common sense should prevail**, grounding decision making in practical sound judgement.

Whether an occupier in a multi-tenant building or an end user in a corporate campus, the strategic and tactical planning guidelines outlined below are situationally dependent. Different circumstances will require different responses in planning for bringing employees back to the office.



Messaging on COVID-19 workplace protocols can take many forms. Photo Credit: Philip Castleton.

Workplace Assessment

During this shelter-in-place time period, conducting workplace research will provide valuable perspective on your working from home employees, that could inform future remote working

policies. Formulating the questions to investigate will drive the research methods, which could include surveys, virtual focus groups, interviews or ethnographic studies such as photography, video and journaling. Gathering this information while employees are still “in situ” at home is essential for validity.

Communications & Training

The level of organizational communications prevalent during the work from home period will be maintained after employees are allowed back into the office. Openly advertising protocols for visitors, social distancing and housekeeping will establish a sense of trust that employees’ health and safety are top priorities. Things will be different around the office and campus post COVID-19, and a robust training and change communications program will establish the “new normal.” Examples of change management techniques include establishing back-to-the-office change champions, tours and instructions for using the office space, if it has been newly re-configured for social distancing, and a variety of change communications documents, such as “Frequently Asked Questions postings” and “Stay-Safe Etiquettes guides.”



Social distancing and screens provide separation and protection. Photo Credit: Andy McRory.

Safety Protocols

Safety protocols can be adapted in various ways. Screening procedures for employees, visitors and contractors may use the Infrared Fever Scan Systems (IFss) or other health assessment measures. Staggered work times/days, or 4-day work weeks can reduce the number of employees in the office at the same time. Lunch and break times can be scheduled or lengthened to minimize occupant loads.

In addition to social distancing and capping group sizes, centralizing trash and recycling bins with frequent disposal can slow disease transmission. A clean desk policy devoid of employee memorabilia will enable the night-time cleaning crew to thoroughly clean all desks.

In addition to the conventional hands-free faucets, and soap and paper towel dispensers, no touch options can be considered for doors, badge readers and garbage/recycling bins. The increased use of virtual digital assistants for enterprise applications is another consideration.

Employees may choose to wear Personal Protective Equipment (PPE) when returning to the workplace to protect the transmission of germs through contact and droplet routes. PPEs include face masks, gloves and potentially goggles. Organizations may also make these available to employees for personal use outside the office as an additional level of protection.

Workplace Guidelines

Reception Areas

If no formalized visitor protocols or badge requirements exist, consider controlling access to the office via signage for phone-in entry. Temporary plexiglass “sneeze guard” screens can be installed at reception or check-in points. Rearrange or take away seating in the reception area to manage social distancing. To maintain hygiene, remove magazines, corporate swag or pens from the reception space, and keep the hand sanitizer dispensers in plain view.

Workstation Areas

To accommodate six feet of social distancing, start with a floor plan indicating the workstations to be occupied, to determine your maximum capacity per floor or wing. Remove chairs or even monitors to discourage un-occupied workstation use. Seating should remain assigned until the widespread threat of virus transmission has diminished. Employees’ personal items should be removed for thorough nightly worksurface cleaning. Pack those beanie babies up and bring them home!

Additional concepts include installing higher panels/shields between workstations or re-orienting workstations, so employees do not face one another.

Collaboration Areas

To satisfy the 10-person maximum gathering rule imposed by many states and municipalities, remove extra conference room chairs and install signage indicating the maximum number of

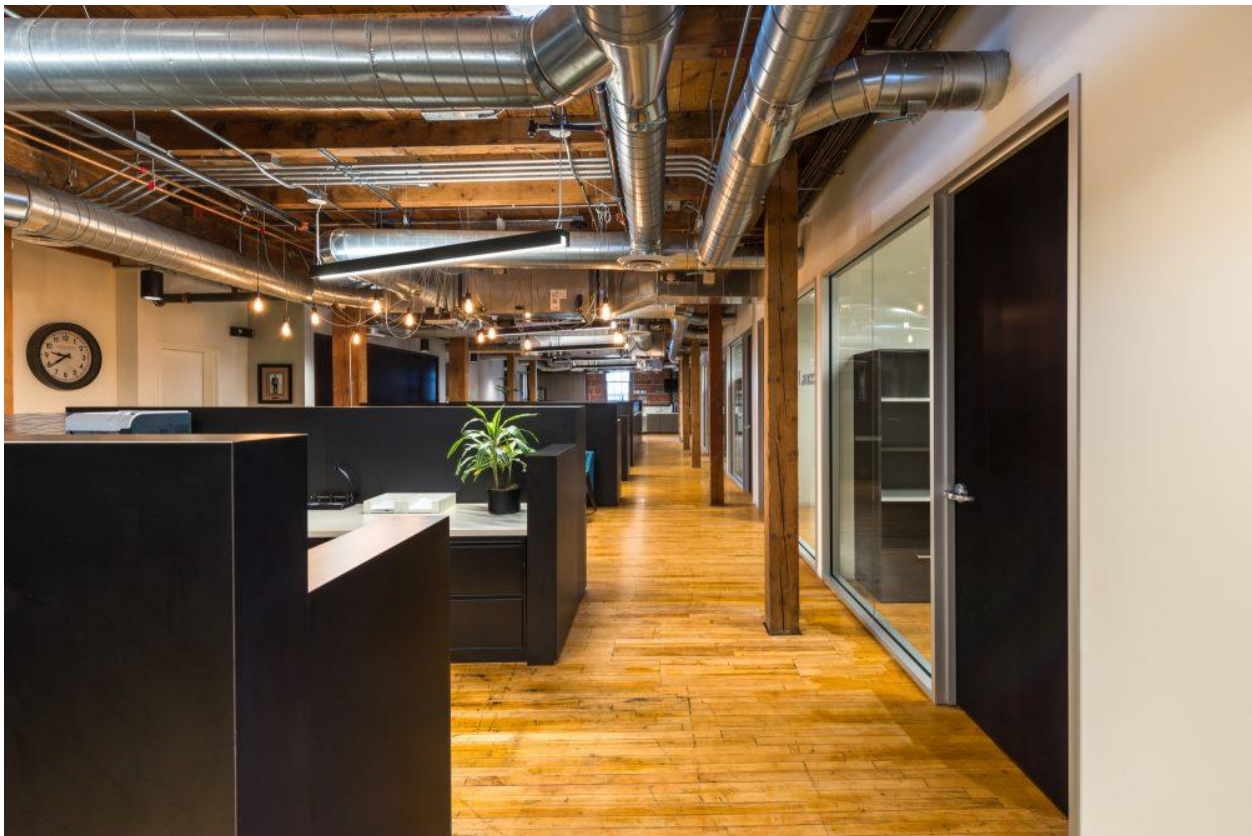
people allowed in each conference, meeting, huddle and focus room. Use a portion of your largest conference room for chair storage, until the need for social distancing has diminished.

Ancillary Spaces

Re-adjust the spacing of ancillary furniture in public areas, break out zones, town-hall spaces and building atria. Remove additional furniture not required in the new layout. Install signage for the maximum capacity allowed by law in these areas.

Training Rooms

As training remains virtual for the foreseeable future, there are a few potential uses for existing training rooms. Locate agile teams into these spaces, relocating furniture to satisfy social distancing requirements. Or repurpose these rooms to temporarily store all the chairs and ancillary furniture that has been removed from the workstation areas. Keeping this furniture on-site rather than shipping to your dealer's storage or your warehouse will ease the transition if/once these pieces can be returned to their original locations.



Indoor air quality and visible housekeeping will take on new significance. Photo Credit: Maha Bazzari.

Food Service Spaces

General guidelines supplemented by your food service vendor will include reduced hours, limited food service offerings, pre-packed items only and no cash sales. Radio Frequency Identification (RFID) technology for the Amazon “grab-go” experience will increase.

The office coffee maker, water dispenser and fresh fruit snacks will temporarily go by the wayside along with the morning bagels and birthday cake, until the threat of transmission has diminished. However, pre-packed twinkies would be safe.

Housekeeping & Cleaning

Touchless hand sanitizers and disinfectant wipes will become like exit signs, employees can see them from every vantage point. Maintaining adequate stock will be challenging until the supply chain has regulated production.

Increase “during the day” housekeeping, maintaining a visible presence so employees see the efforts of the organization to keep them healthy and safe.

The Electro-static cleaning option involves spraying electronically charged mist onto surfaces or objects. The positively charged particles in the spray cling to and coat any surface for the disinfecting agent to sanitize. While not an inexpensive option, this method offers a strong defense and pro-active measure to give employees the assurances they will demand.

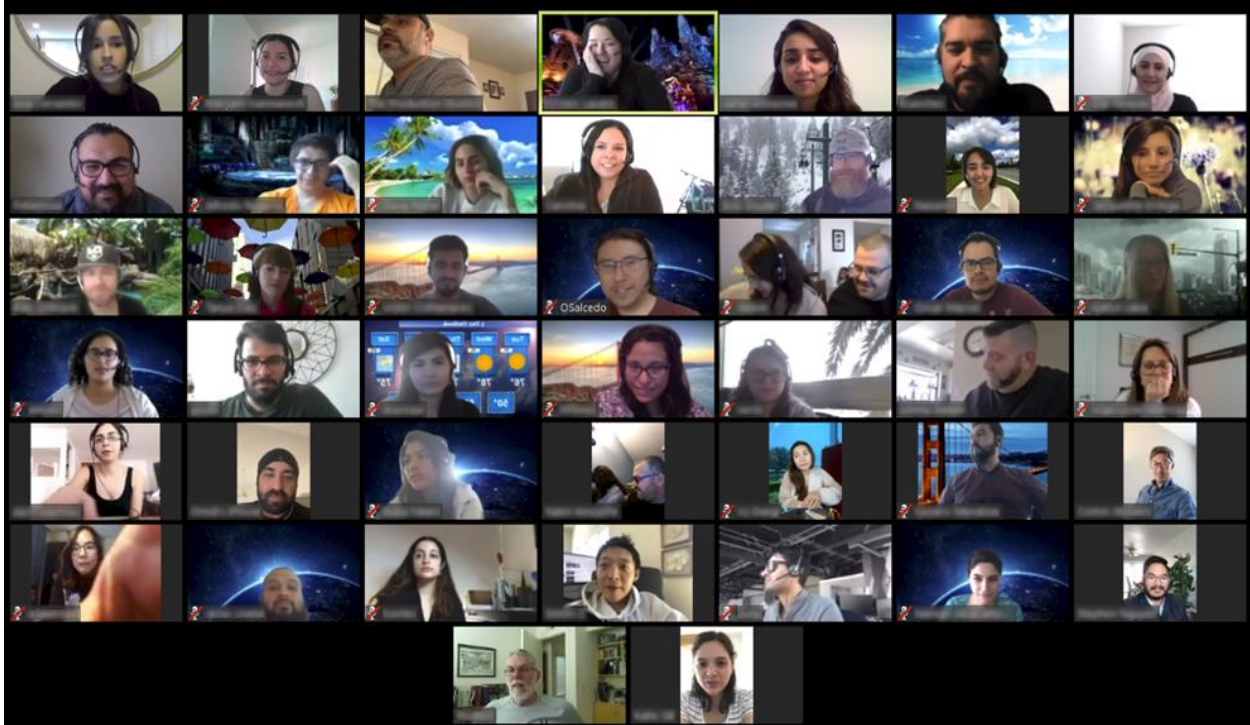
nanoSeptic™ door handle and door push skins provide continuously self-cleaning surfaces by using mineral nanocrystals to create an oxidation reaction. Other nanoSeptic™ products include everything from desk and counter mats to mouse pads and tissue box covers.

UV Phone sanitizing stations use UV-C light to clean phones. They have not been tested yet on their efficacy against the COVID-19 virus, however research has shown that our phones have more bacteria than the common public toilet. This would be another strategy to build employee confidence in returning to work.

Engineering & Operations

Indoor environmental management has overnight transitioned from a line on next year’s capital budget to an immediate requirement for employees to feel safe to return to the office. Components of this system include free air, optimal humidity, air quality and occupancy indicators, improved filtration, and cleaned and/or upgraded ventilation systems.

Nano coatings are anti-microbial, anti-viral and anti-fungal. They reduce surface contamination and are self-cleaning. These coatings can be applied by spraying or dipping and adhere to most surfaces. Yes, the workplace will adopt healthcare industry practices and materials.



Zoom Meeting

Technology

The Voice Over IP (VoIP) or soft phone is a safer, cleaner option than the traditional phone handset. And the use of this technology support working remotely. Normal hygiene practices have discouraged the sharing of keyboards, mice and headsets. In shift settings where multiple people share one workstation, accommodations need to be made for each employee to bring their own technology gear.

Virtual meeting and collaboration platforms will continue to keep the people connected professionally and personally. Encouraging virtual meeting attendance even while in the office may be recommended until the virus transmission has curbed.

Phased Return to the Office

The return of employees to the workplace will vary by organization but will undoubtedly occur in waves. Driven by business demands, risk categories or operational requirements, access control systems will monitor who is given access to the campus, building or floor.

Employees may return to the office for a time while the organization determines the extent of remote work opportunities based on personal preferences and business demands. The capacity of the workplace may have been significantly reduced due to social distancing. Workplace standards should be loosened to allow the best place for employees to work. If a manager's office sits empty due to their ability to work from home, then a staff person should be allowed to use that space.

Hoteling or shared desking programs may be curtailed until the new normal is established.

What would Thomas Paine say?

There are vast amounts of speculation and mis-information surrounding the Coronavirus, leading to anxiety and uncertainty. The local, national and global impacts are monumental. The eventual return to the workplace will provide a sense of routine and the beginnings of the new normal. In planning that return the considerations can be overwhelming.

Two hundred and forty-four years ago, Thomas Paine wrote the pamphlet [Common Sense](#) to the American colonists. He began with this line:

“In the following pages, I offer nothing more than simple facts, plain arguments and common sense...” (Thomas Paine, January 10, 1776)

As our organizations navigate the COVID-19 complexities, let *common sense* be our guide.

